



Classified by
Underwriters Laboratories Inc.
to ASTM E-814, UL1479, UBC 7-5
and CAN4/ULC-S115M

System No. C-AJ-1227

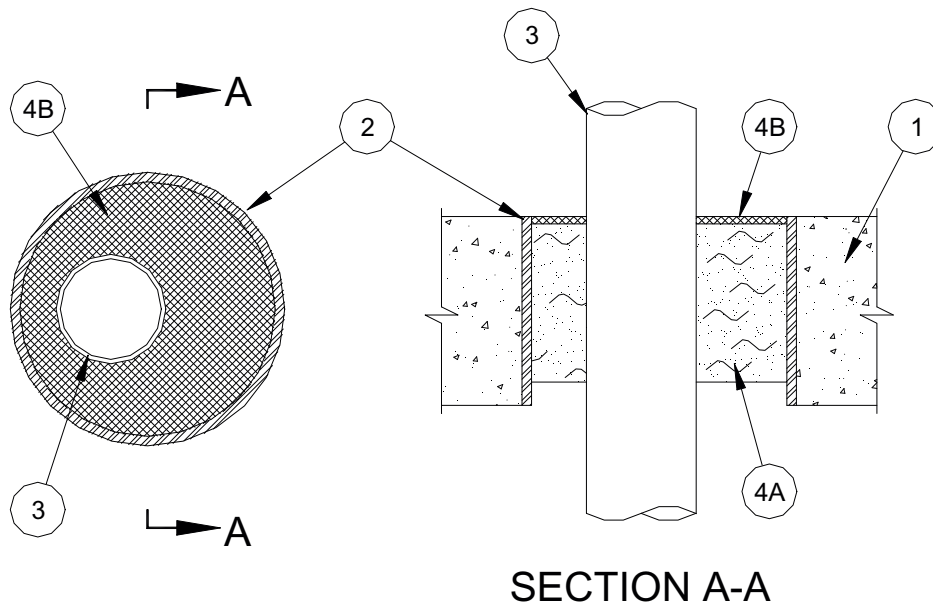
F Rating - 3 Hr

T Rating - 0 Hr

L Rating At Ambient – Less Than 1 CFM / Sq. Ft.

L Rating At 400°F – 3 CFM / Sq. Ft.

W Rating - Class 1



1. **Floor or Wall Assembly** - Min 4-1/2 in. (114 mm) thick reinforced light-weight or normal weight (100 - 150 pcf or 1600 - 2400 kg/m³) concrete. Wall may also be constructed of any UL Classified **Concrete Blocks***. Max diam of opening is 6 in. (152 mm).

See **Concrete Blocks** (CAZT) category in the Fire Resistance Directory for names of manufacturers.

2. **Sleeves (Optional)** - The following sleeves may be used:
 - A. **Metallic Sleeve** - Nom 6 in. (152 mm) diam (or smaller) Schedule 40 (or heavier) steel pipe cast or grouted into floor or wall assembly, flush with floor or wall surfaces. Metallic sleeve may be installed in floor assemblies such that the sleeve extends up to 6 in. (152 mm) above top surface of floor.
 - B. **Nonmetallic Sleeve** - Nom 6 in. (152 mm) diam (or smaller) Schedule 40 polyvinyl chloride (PVC) pipe cast or grouted into floor or wall assembly, flush with floor or wall surfaces.

3. **Through-Penetrants** - One metallic pipe, conduit or tubing installed either concentrically or eccentrically within the firestop system. The annular space shall be min 1/2 in. (13 mm) to max 2-3/8 in. (60 mm). Pipe, conduit or tubing to be rigidly supported on both sides of floor or wall assembly. The following types of pipe, conduit or tubing may be used:
- A. **Steel Pipe** - Nom 4 in. (102 mm) diam (or smaller) Schedule 10 (or heavier) steel pipe.
 - B. **Conduit** - Nom 4 in. (102 mm) diam (or smaller) steel electrical metallic tubing (EMT) or steel conduit.
 - C. **Copper Tubing** - Nom 3 in. (76 mm) diam (or smaller) Type M (or heavier) copper tubing.
 - D. **Iron Pipe** - Nom 4 in. (102 mm) diam (or smaller) cast or ductile iron pipe.
- 3A. **Shielded Slip-On Coupling – (Optional, Not Shown)** - Nom 4 in. (102 mm) diam (or smaller) 32 gauge (or heavier) corrugated stainless steel shielded rubber coupling for use with iron pipes only. Coupling to be secured to pipe with stainless steel hose clamps at any point beyond the surface of floor or wall, or may extend a max of 1 in. (25 mm) into opening.
4. **Firestop System** - The firestop system shall consist of the following:
- A. **Packing Material** - Min 3-3/4 in. (95 mm) thickness of min 4.0 pcf (64 kg/m³) mineral wool batt insulation firmly packed into opening as a permanent form so that the width of the wool is compressed at least 50 percent. Packing material to be recessed from top surface of floor or from both surfaces of wall as required to accommodate the required thickness of fill material. When metallic sleeve extends above top surface of floor, packing material to be recessed from top surface of floor or top surface of sleeve as required to accommodate the required thickness of sealant.
 - B. **Fill, Void or Cavity Material* - Sealant** - Min 1/4 in. (6 mm) thickness of sealant applied within the annulus, flush with the top surface of floor or with both surfaces of wall. When metallic sleeve extends above top surface of floor, sealant applied within the annulus, flush with top surface of floor or top surface of sleeve.
- NUCO INC.** - Self Seal GG-200, ●Self Seal GG-266 (floors or walls) or Self Seal SL-100 (floors only)

* Bearing the UL Classification Mark

• In addition to the standardized environmental exposures, Self Seal GG-266 was also exposed to supplemental environmental exposures of an Industrial Atmosphere (CO₂/SO₂) and Combination Wet, Freeze and Dry Cycling.